



living
with
water

BUTCHERS' BRIDGE

Authors:

ATELIERarhitekti –
Nataša Blažko, Jurij Kobe,
Maja Kovačič, Samo Mlakar,
Urša Podlipnik, Rok Žnidaršič,
Tomaž Habič, Jakov Brdar

Collaborators:

Ina Radšelj, Tina Marn, Peter
Plantan, Tanja Bojc, Domen
Bergoč, Samo Radinja, Nejc
Lebar, Meta Zupančič

Investors:

Municipality of Ljubljana,
Energetika Ljubljana d.o.o.
Location: Ljubljana
Year: 2010

Structural engineering:

Tomaž Habič

Electrical engineering:

Tomaž Jevšnikar

Installation engineering:

Tomislav Celarc

Contractors: SCT, d.d., Gradis
gradbeno podjetje, d.o.o.

Landscape architecture:

Iztok Kavčič

Photographers:

Jurij Kóbe, Miran Kambič

With the famous Triple Bridge on one side and Dragon Bridge further downstream, Butchers' Bridge, completed in 2010, is in excellent company. A bridge has been planned on this site since the famous Slovenian architect Jože Plečnik left an opening in the otherwise continuous wall of the market complex. Plečnik designed a proposal for Butchers' Bridge as well, a monumental covered market bridge, but it was never realised. The authors of the new bridge, Atelier Architects, decided to reinvent the location and its specifics by introducing a modern lightweight bridge, complementing Ljubljana's architectural heritage.

The bridge is constructed from steel shell beams, which were chosen to make the construction process faster and more rational. The slightly bent platform leads from one stairway to the other, leading down towards Petkovškovo Embankment. Glass panels are added to the side of the platform to emphasise the connection with the water, while several sculptures by Jakov Brdar accompany pedestrians over the bridge. Quite spontaneously, the bridge's railings have followed several examples worldwide and became a popular place for so-called "love locks", which serve as proof that the bridge is now part of the city's everyday life.



...

Floor plan



...

Atelier Architects decided to reinvent the location and its specifics by introducing a modern lightweight bridge, complementing Ljubljana's architectural heritage.

KOSEZE POND BOAT STATION

Authors:
Medprostor,
Modular Arhitekti,
Rok Žnidaršič,
Miha Kajzelj

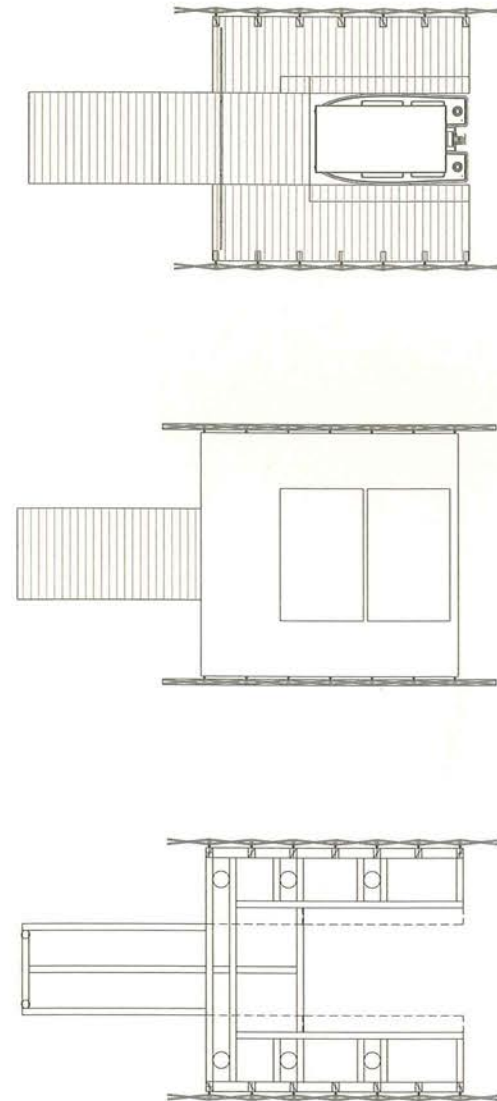
Collaborators:
Martin Kruh

Investor:
Arhiel d.o.o.
Location: Ljubljana
Year: 2014

Photographer:
Martin Kruh

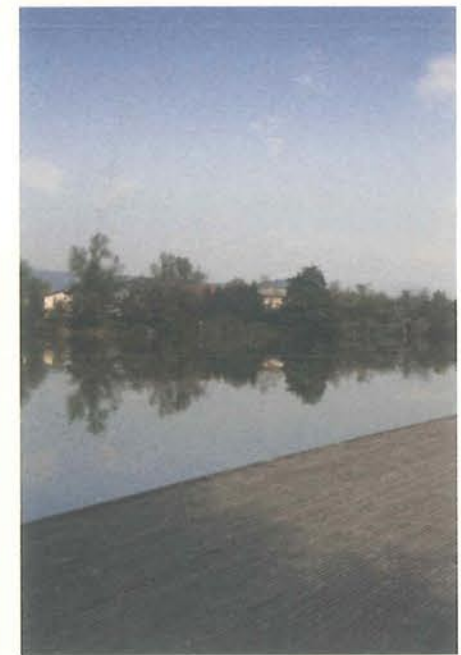
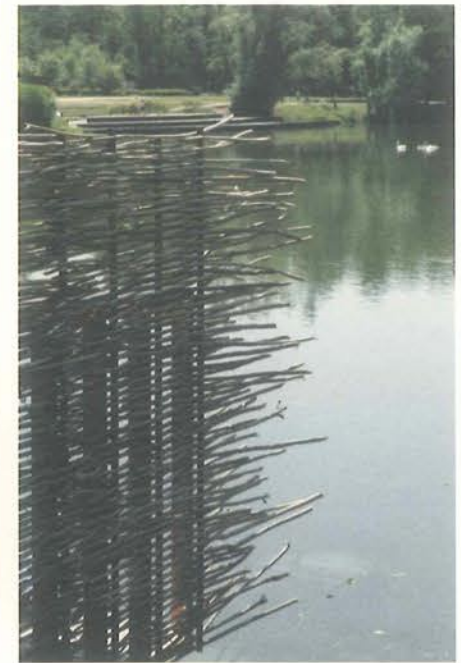
Located on the bank of the Koseze pond, a popular meeting and recreational point in Ljubljana, this temporary object almost disappears into the surrounding rushes. Its specific materiality and makes the boat station a wonderful example of architecture that celebrates organic imperfection. The architects have used local branches and twigs to create the tactile façade, reminiscent of a bird's nest or ripples on the pond's surface, by using the ancient technique of weaving. Its structure is simple and functional – the protective envelope is set on a wooden platform, connected to the shore by a short bridge.

The object was designed to provide protection for the research vessel LIFE Stop CyanoBloom 1, that measured the quality of water in the pond and detected the presence of cyanobacteria. Overlooking the pond with its rich flora and fauna, this building's nature is not only functional, but also serves as a place of contemplation and re-connection. Detached from the busy recreational path on the bank above and set directly on the water surface, the building serves its purpose in a self-effacing way, but carries great architectural value at the same time.



• • •

Floor plans on
different levels





NAVIGABILITY STUDY OF THE LJUBLJANICA RIVER

Conceptual Project

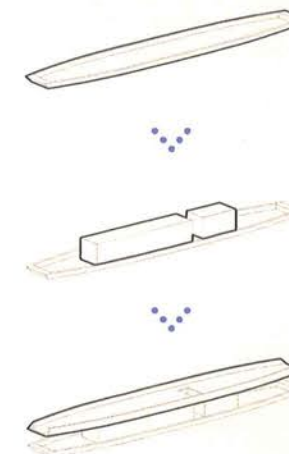
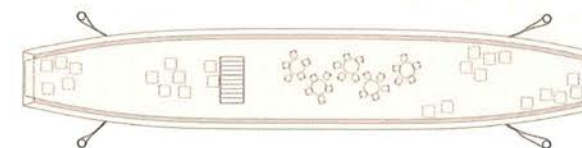
Authors:
Medprostor –
Rok Žnidaršič, Samo Mlakar
Locus d.o.o. –
Nuša Britovšek, Nina Lipušček,
Leon Kobetič
Aquarius d.o.o. –
Martin Žerdin, Leonida Šot
Pavlovič, Lea Trnovšek,
Boris Turk
Kopač in otroci d.o.o. –
Janez Kopač
Rečni transport d.o.o. –
Tomislav Zupančič
MMK – Janja Železnikar
Collaborators:
Martin Kruh (Medprostor)

Investor: RRA LUR
Location: Ljubljana
Year: 2012

Visualisations provided
by the authors

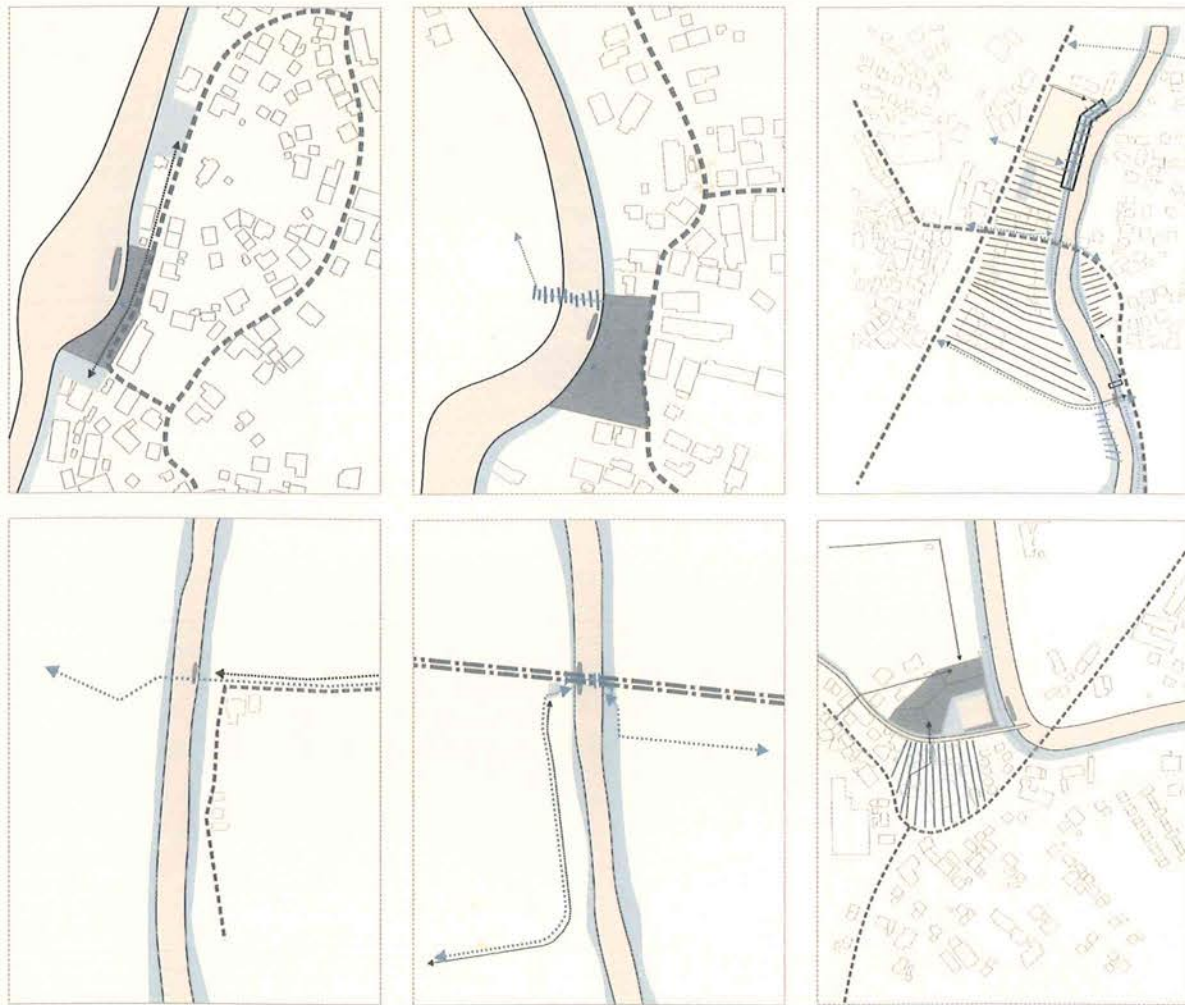
A large-scale navigability study of the Ljubljana river was initiated by the municipalities of Ljubljana, Brezovica, Borovnica and Vrhnika in an attempt to optimise the regulation of its waterway between the cities of Vrhnika and Ljubljana. As part of the project a series of interventions was proposed by architects from the office Medprostor in order to tighten the relationship between the river and local residents. As most of the project area lies within Ljubljana Marsh Nature Park, all of the proposed interventions had to meet strict regulations. The architects designed a common element to create a spatial continuity through the large location of the project – a platform, the shape of which is based on cargo boats used by the Romans on the Ljubljana two thousand years ago.

Boat stations along the river will be the new junctions between water and land, providing information points, cafés and toilets. The architects also arranged surrounding parks and sections of the river-bank. The project also included several footbridges and small ports. Special attention was given to preserving local flora and fauna, and the continuity of local architectural properties.



...

The architects designed a common element to create a spatial continuity through the large location of the project – a platform, the shape of which is based on cargo boats used by the Romans on the Ljubljana two thousand years ago.



...

1 (above): Wharf and boathouse
Maroltov izvir

2 (below): Wharf and public raft
by the Bevke farmhouse

...

3 (above): Wharf Kotnikova do-
mačija

4 (below): Wharf and railroad
bridge adaptation

...

5 (above): Wharf and railroad
bridge adaptation

6 (below): Wharf and bridge adap-
tation

...

7 (above): Wharf by the motorway
junction

8 (below): Wharf and bridge
adaptation

...

9 (above): wharf Tojnica

10 (below): wharf by the
St. Michael church

...

11 (above): wharf Vrhnika

12 (below): wharf by the confluence
of the Ljubljana and the Ižica



water surfaces

green surfaces by the water

park surfaces

service surfaces and buildings

roads

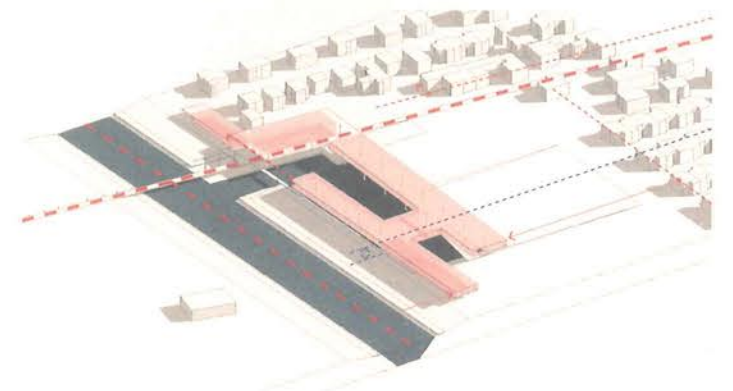
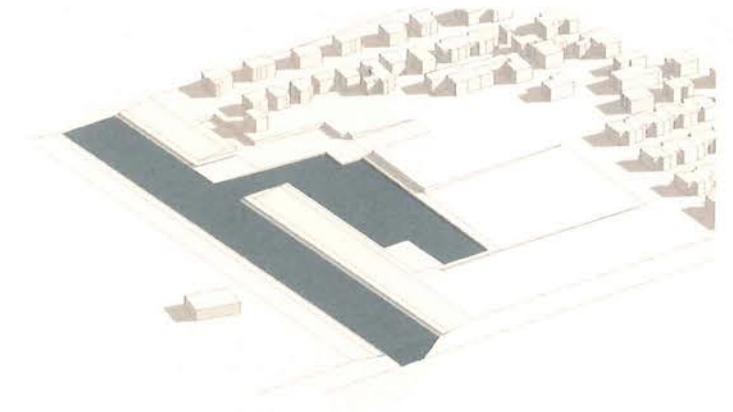
connecting public areas / connection to the Ljubljana river

service area

walking area

Boat stations along the river will be the new junctions between water and land, providing information points, cafés and toilets. The architects also arranged surrounding parks and sections of the riverbank. The project also included several footbridges and small ports.

...



...

Livada port conceptual design